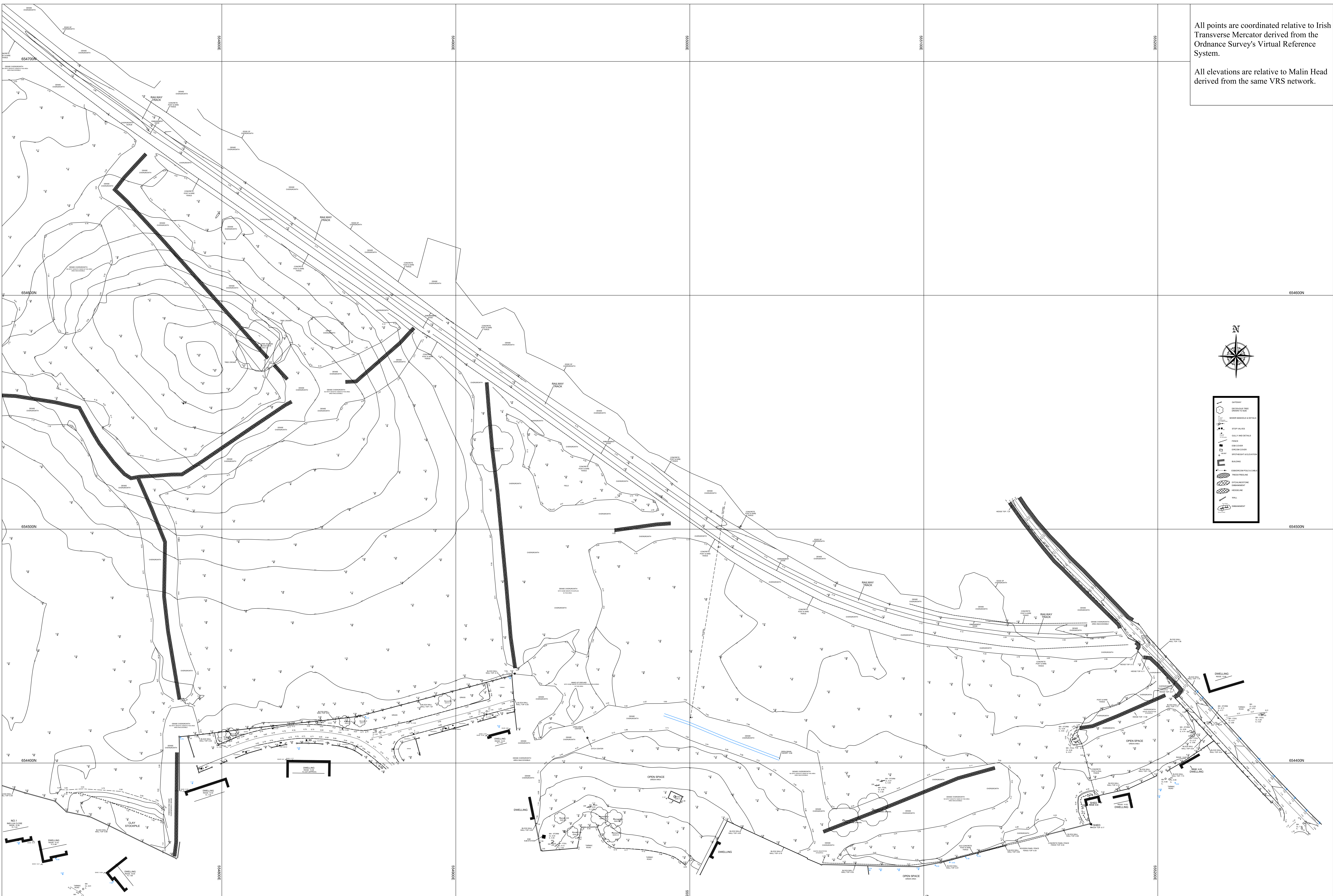



All points are coordinated relative to Irish Transverse Mercator derived from the Ordnance Survey's Virtual Reference System.

All elevations are relative to Malin Head derived from the same VRS network.



 Land & Engineering Surveyors Info@ErkinaSurveys.ie	Ballyduff Road Twmilieborris Thurles County Tipperary 087 2617509 0504 44865	Drawn By: B Gibson	Date 18-11-21	Scale 1:500 (A0)
	Topographical Survey of Site at Raheen, Limerick, County Kilkenny.			
	Client:	Drawing No. 180302-3	Rev.2	